



PRODUCTS

[Home](#) > [Products](#) > EM-5 Continuous Emission Monitoring System (Cl₂ Detection)EM-5 Continuous Emission Monitoring System (Cl₂ Detect...

Product Overview



Message



Email

Based on years of experience on UV technology, EM-5 Continuous Emission Monitoring System (Cl₂ detection) is a new monitoring product for measuring chlorine. It is composed by dust monitoring subsystem, gaseous pollutant monitoring subsystem, flue gas parameter monitoring subsystem, and system control & data acquisition & processing subsystem. It can be used to monitor Cl₂,



- Secondary condensation for fast water removal and cooling, decreasing contact time between gas and water and reducing Cl₂ loss.
- Adopt mild heat tracing technology, less maintenance of measuring cell.
- High measurement accuracy, detection limit as low as 0.5ppm.
- Adopt anti-corrosion material, can be applied in corrosive occasion.
- Without cross interference by CO, CO₂, CH₄, NH₃, moisture or other organic substances.
- Compact structure, high reliability, convenient for transport and installation.

| Application

Applied in occasions requiring chlorine monitoring such as chlor-alkali industry and exhaust emission, etc.

| Specifications

Cl₂: 0~100ppm (customizable).

O₂: 0~25%.

Dust: 0~5mg/m³, 0~50g/m³.



Pressure: 1.0MPa (customizable).

Dimension: 800mmx600mmx2000mm.

IP grade: cabinet IP42, others IP65.

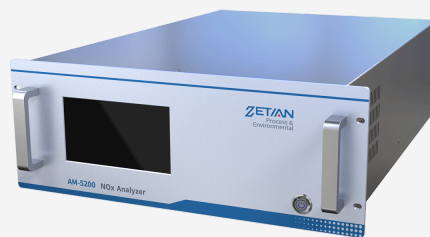
Power supply: (220±15%)VAC, 5000W.

Working temperature: -20°C~50°C.

Working humidity: 0~95%RH (non-condensing).

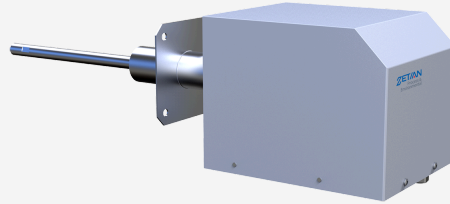
Compressed air: (0.4~0.8)MPa, 0.25m³/min, clean, oil-free & water-free.

You May Also Like



AM-5200 NOx Analyzer





GSP-100 Sampling Probe (Conventional)

GCOM-3000 VOCs Online Monitoring System

Products

News

Home
